

[Home](#) » [About Us](#) » [Publications](#) » [Public Exhibition](#) » [Information](#) »

The Entrance - Rock Groyne

In the 2015/16 Budget, the NSW Government allocated \$2.4 million to construct a rock groyne on South Entrance Beach, located just to the south of the Surf Life Saving Club tower.

The rock groyne is planned be 100 metres long and is expected to increase the length of time that sand stays on South Entrance Beach without requiring renourishment.

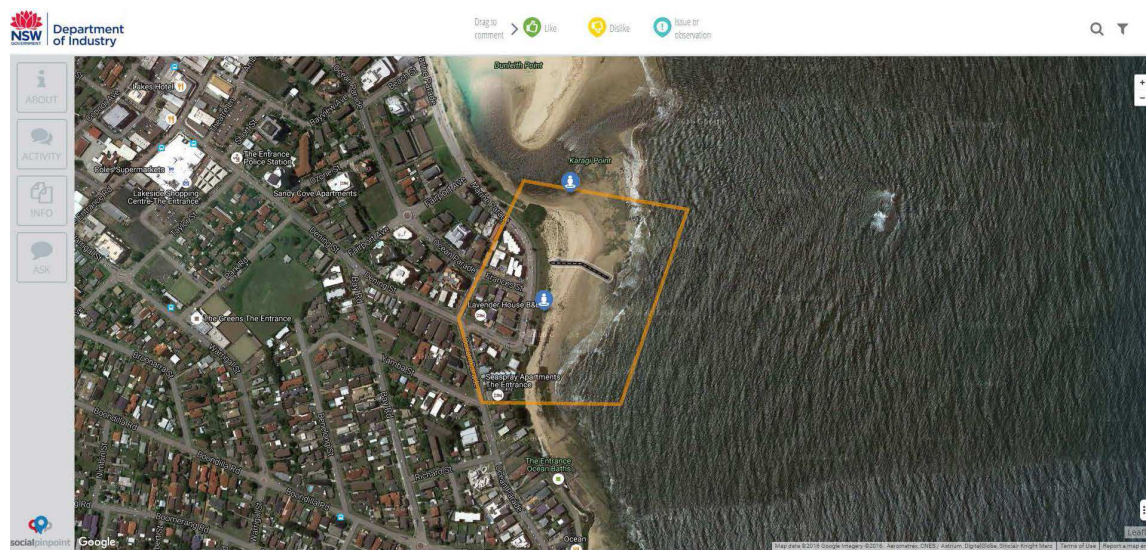
The Department is giving everyone the opportunity to learn more about the proposed rock groyne project and have their say with the on-line forum open until 31 October 2016.

To add your comment please "drag and drop" one of the icons onto the map after you have clicked "Get Started Now".

Have your say

We are now giving everyone the opportunity to have their say about the proposed rock groyne.

Click or tap on the map below to go to an interactive map where you can add your comments.



An image of the interactive map to leave comments about the proposed rock groyne.

Community drop in information session

A community information session was held on Wednesday, 14 September 2016, from 4pm to 8pm at Diggers@the Entrance.

FOR MORE INFORMATION

Refer to our [factsheet](#) on the proposed rock groyne and the [Review of Environmental Factors](#).

You're welcome to call us on 1300 886 235 or [email us](#) for more information.

Proposed construction of a rock groyne South Beach, The Entrance

September 2016



Artist's impression of the proposed rock groyne

In the 2015/16 Budget, the NSW Government allocated \$2.4 million to construct a rock groyne on South Entrance Beach, located just to the south of the Surf Life Saving Club tower.

The rock groyne is planned to be 100 metres long and is expected to increase the length of time that sand stays on South Entrance Beach without requiring renourishment.

The construction of the groyne would mean that there would be some disruption to beach access during construction and once completed, the groyne would extend over the beach and into the surf zone as can be seen in the artist's impression.

In 2013 the Office of Environment and Heritage (OEH) engaged Cardno Pty Ltd to investigate a range of management options for The Entrance Beaches with one of the options being a short groyne.

The report can be found on the Office of Environment and Heritage [website](#).

Review of Environmental Factors

A Review of Environmental Factors has been prepared for the proposed construction of the rock groyne.

A range of issues has been considered such as local vegetation, fauna, traffic management, site safety, noise pollution, water quality and waste management.

This report is available on the Department of Industry – Lands www.crownland.nsw.gov.au

Community Drop In Session and on-line information and feedback

A community information session about the construction of the proposed rock groyne will be held on Wednesday, 14 September from 4pm to 8pm at the Diggers @ The Entrance.

Information and the opportunity to provide comments is available on-line at [SocialPinpoint](#) and through the NSW Government "Have Your Say" [website](#) and www.crownland.nsw.gov.au

For more [information](#) or call 1300 886 235

